

Wednesday, June 3, 2020

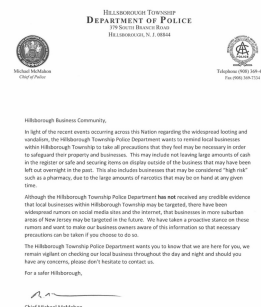


HILLSBOROUGH e-News

Township News

[A Message from Police Chief McMahon](#)

"Given recent events throughout the nation, it is important that we remain vigilant. Thank you to Chief McMahon for providing this guidance to our Business Community. Again, as his letter states at this present time, there is no credible evidence that our community will be targeted. Should information change we will be working with Chief McMahon to provide updates as necessary," commented Committeewoman and Public Safety Liaison Gloria McCauley.



[Hillsborough Health Department Business Highlight:](#)

The Hillsborough Health Department has come across some exceptional attention to detail while conducting their observational surveys and inspections. This week the Hillsborough Health Department wanted to highlight Wawa, at 381 Triangle Rd, for going above and beyond service in implementing protocols to break the chain of infection for Covid-19, and make customers feel safe to shop there. Wawa has a coffee-by-order option to help enforce a strict 6 foot social distancing practice. In addition, their bakery section has all their pastries wrapped to provide an extra level of cross contamination prevention.

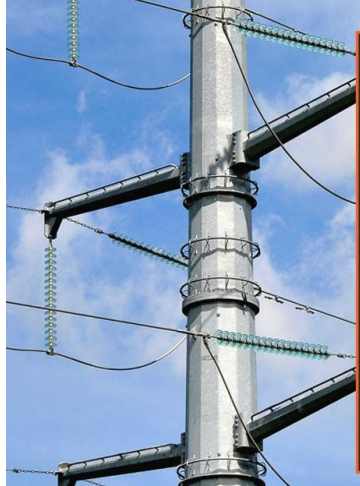


Registered Environmental Health Specialist Nick DeLisi performing inspection

[Hillsborough Residents: Don't Forget to Respond to the Census!](#)


The 2020 Census is happening now! You can complete your questionnaire [online](#), by phone, or by mail.

[PSE&G is Prepared for Strong Winds, Thunderstorms](#)



Report your outage and get the latest PSE&G outage info:

- PSE&G mobile app
- Alexa on your smartphone
- Text "OUT" to 47734
- Visit pseg.com/myaccount
- Call 1-800-436-7734
- Stay up-to-date on outage info at pseg.com/outagecenter
- Follow us on Facebook, @PSEG, and Twitter, @PSEGdelivers




NJ American Water Tips for Wise Water Use

- **Reuse it.** Use water from rain barrels and kiddie pools for watering lawn and gardens.
- **Embrace the bucket!** Instead of using a running hose, use water contained in a bucket for washing cars and pets, and rinsing sandy/grassy feet.
- **Timing is everything.** Only water during the coolest parts of the day (early morning or evening) to minimize evaporation. Also, be aware of which plants don't need to be watered every day.
- **Odd/Even Watering of your lawn.** Watering your lawn uses a lot of water, so only water your lawn when it needs it. Generally, lawns only need an inch or so of water per week.
- **Rain delay.** Watch weather forecast to avoid "Mother Nature" re-watering your garden, which could also damage plants.
- **Pick your plants wisely.** Purchase varieties that require less water and remain hearty in drier weather. And don't forget to mulch (only 2-3") to help with water retention.
- **Be a leak detective.** Find and fix leaks and breaks in hoses, sprinkler systems and pipes. For help, download New Jersey American Water's [Leak Detection Kit](#).
- **Raise the blade.** Raise the level of your lawnmower blade to avoid lawn burnout and the need for watering.
- **Keep an eye out.** Watch your sprinkler's "sweep" to make sure all the water is reaching vegetation that needs it and not the pavement! Check this frequently in case a person or animal has accidentally redirected your sprinkler.

Updates from the Hillsborough-Millstone Municipal Alliance

Upcoming virtual program will be held on June 9th. For information on registration.

- June 9th: Somerset County hosting a Narcan training



Are you aware of **TeenVape**?
We are a community based organization dedicated to substance abuse education & prevention.

Upcoming Virtual Events

Child Break	TeenVape
Wednesday, June 3rd 1:00 - 2:00 PM	Wednesday, June 3rd 1:00 - 2:00 PM
Learn about vaping, teen substance use and how to talk with your children about these topics	Learn about vaping, teen substance use and how to talk with your children about these topics
To register for free event being held on June 3rd, GO TO: GO TO REGISTRATION	To register for free event being held on June 3rd, GO TO: GO TO REGISTRATION
Narcan Training	Narcan Training
Tuesday, June 9th 10:30 - 12:00	Tuesday, June 9th 10:30 - 12:00
Narcan Nasal Spray counteracts the life-threatening effects of an opioid overdose. No Medical Training Required.	Narcan Nasal Spray counteracts the life-threatening effects of an opioid overdose. No Medical Training Required.
To get more information and to register: GO TO REGISTRATION	To get more information and to register: GO TO REGISTRATION

Parents Who Host - reminder for parents about the consequences of serving underage kids as the summer/grad season approaches.

For the safety of your children and our community, please keep this in mind as you celebrate this accomplishment.



PARENTS WHO HOST LOSE THE MOST

Don't be a party to teenage drinking.
It's against the law.

[Hillsborough High School Field Hockey Team's Homework Helpers Offering Free Tutoring \(click here for more information\)](#)

Online school has its advantages and disadvantages. In efforts to help out younger students who are having difficulties adapting to online school, the Hillsborough High School Field Hockey team is volunteering their time to tutor, read stories and answer school-related questions to younger kids via email and google meet. The team is available to help out grades K-8. The team has girls who are skilled in Math, Science, History and English. [Read more.](#)

[Changes Being Made to BoroSAFE](#)

Since May is Mental Health Awareness Month, it's the perfect time to let you know about some important changes to BoroSAFE. In addition to educating everyone about suicide awareness and prevention, they are expanding their focus to encompass the whole continuum of mental health issues. [For more information.](#)

24/7 Resources:

[Crisistextline.org](#) Text HOME to 741741
2nd Floor Youth Helpline (call or text) 888-222-2228
National Suicide Hotline 1-800-273-TALK (8255)
Always call 911 in case of emergency



Hillsborough is Open for Business

Which of your favorite Hillsborough locations are "Open for Business"?
Support Hillsborough's Local Businesses!



Somerset County News

[County Provides COVID-19 Online Resource Center](#)

[Greater Raritan Workforce Development Board - Free Online Resources Help Residents Hone Virtual](#)

[Somerset County June Recycling Schedule](#)

[Closures Extended for County-Operated Senior Centers](#)

[County Transportation to Phase-In Services June 1st](#)

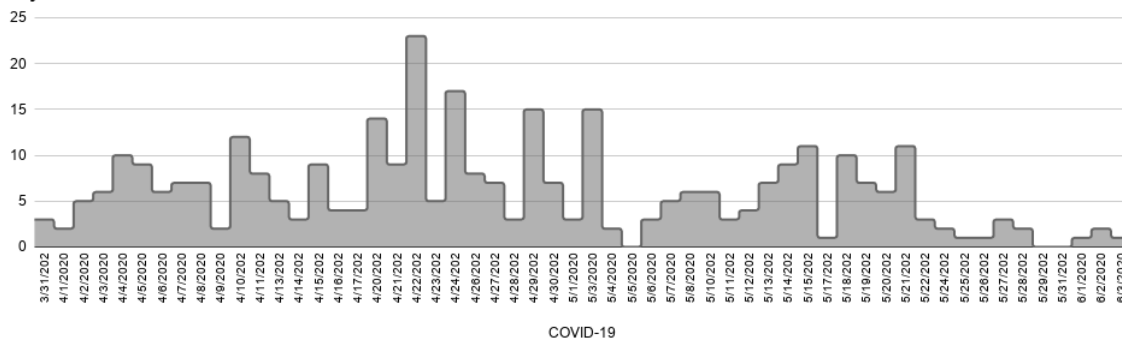
COVID-19 Hillsborough Reported Case Update

[COVID-19 Case Information is updated daily on the Township website](#)

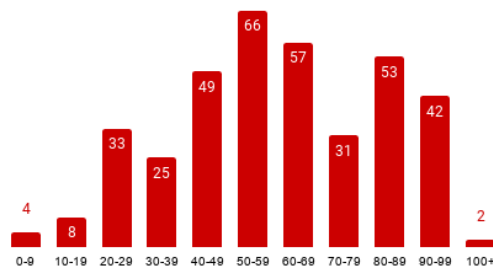
	Hillsborough	Millstone	Somerset County	New Jersey	United States
CASES	370	2	4,066	162,068	1,802,470
DEATHS	52	NA	422	11,880	105,157
RECOVERED	184	NA	NA	NA	NA

Breakdown of Hillsborough Township Cases As Reported by Hillsborough Township Health Department

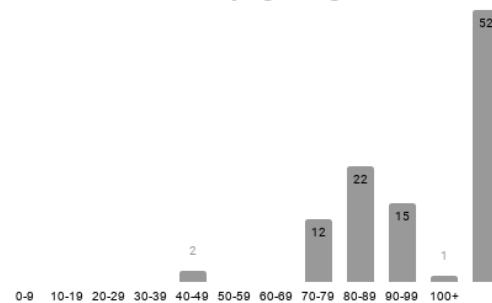
Daily Case Count



Positive Hillsborough Township Cases by Age Range



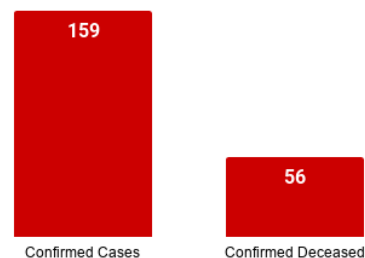
Deceased by Age Range



Disclaimer:

Please be advised that the numbers posted here and on the Township website are those that are reported by Hillsborough Township Health Department based on reports from the NJ Department of Health surveillance system. The reported numbers are only from those individuals who have been tested for COVID-19 and are confirmed positive through an FDA approved laboratory for COVID-19 testing purpose. It does not include those contacts of the positive individuals or any individuals, who are sick and have not been tested.

Hillsborough Long Term Care/Assisted Living Facilities



* Confirmed cases and confirmed deceased from Long Term Care and Assisted Living Facilities may not also be included in the total number of cases above.

The number of cases from the above section by age and deceased cannot be added to the Long Term Care and Assisted Living Facilities confirmed cases and confirmed deceased to get a total case count and a total deceased count. The reason for this is

that there are different reporting mechanisms in place capturing that data. The NJ Department of Health surveillance system obtains reports from State run labs. The Long Term Care and Assisted Living Facilities utilize many different labs, State, out-of-state and private, therefore, their numbers are not completely reflected in the total Hillsborough numbers from the State system at this time. That withstanding, you cannot simply add the two sets of numbers either to get a total case count, as some of the LTC/ALF numbers are counted in the State system.

If you are a Hillsborough resident and have tested positive for Coronavirus / COVID-19, please contact the Health Department at 908-369-5652.

The Hillsborough Township Health Department continues to monitor all cases and is working with the State to identify any potential contacts for follow-up. A representative from the Hillsborough Township Health Department will reach out to all individuals determined to have been in close contact with the positive testing persons within 24-48 hours of each case being confirmed.

[NJ Residents with a Positive COVID-19 Test:](#)
[Instructions & Next Steps](#)

Somerset County COVID-19 Testing Site

[Testing at Raritan Valley College \(RVCC\) Continues on June 4th](#)

COVID-19 Testing Continues for Somerset County residents at Raritan Valley Community College (RVCC) on Thursday, June 4th. Testing will be by appointment only and a valid doctor's prescription is required. Testing site will be open from 10 a.m. to 1 p.m.



*Hillsborough Township
Municipal Services Open
to Residents and Businesses*

Hillsborough Municipal Services are open to serve both our residents and business community, despite the Municipal Building being closed to the public. [See the full list of services.](#)

Below are photos of Hillsborough Township Departments delivering the services that you have come to expect from Hillsborough Township.

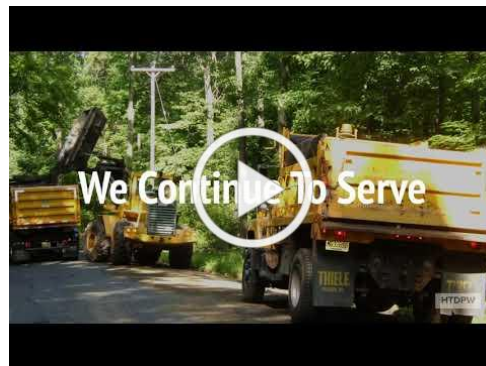


Parks and Recreation:
Parks' Cody Woodrick performing maintenance work in AVM Park



Business Advocate:
Director David Kois visiting Victor's Pizza for Takeout Tuesday

[See Hillsborough Township Public Works Department's "We Are Public Works" Video](#)



Meeting Updates, Cancellations and Closures

Due to the Governor's Executive Orders and pursuant to P.L. 2020, c.11, all Township meetings will be held using virtual technology and the public may only participate in meetings remotely. Please [visit the calendar](#) on our municipal website for meeting dates, cancellations, updates and instructions.

COVID-19 State Updates & Community Resources

For a full list of COVID-19 Resources, visit the Hillsborough Township [COVID-19 Information Page](#)

[COVID-19: Red Cross Offers Virtual Care for New Jersey Families Who Have Lost Loved Ones](#)

Our hearts are with you.

If you lost a loved one to COVID-19, please contact us for emotional support and other services.

redcross.org/VFAC



[Hillsborough YMCA - Information For Essential Personnel Child Care](#)

[PIONEER Family Success Center](#)

The Pioneer Family Success Center is a program of EmPoWER Somerset, a nonprofit organization. We offer the community a gathering place, connect families to helpful resources in Somerset County, NJ and bring families together through free events, programs & local activities. [For June Events.](#)

[Safe + Sound Somerset](#)

Safe+Sound Somerset is a team of dedicated and qualified diverse professionals and volunteers sharing a commitment to empowering survivors and engaging the community to end abuse.



[Contact Tracing Opportunity](#)

Are you interested in assisting NJ's contact tracing efforts? [Register at the NJ COVID-19 Information Hub website](#) and be notified when opportunities become available.

[Click here for updates from Somerset County Library System of NJ \(SCLSNJ\)](#)

[For Weekly COVID-19 Message from Dr. Lisa Antunes, Superintendent of Schools](#)

How Can I Help?

[Click here for information on Hillsborough Township's Community Assistance Network \(C.A.N.\) Program](#)

Donations to the Hillsborough Community Assistance Network (C.A.N.) can now be made [online](#). Donation of items are also accepted - [see list of most needed items](#).



[Somerset County Office of Emergency Management Continues to Accept Personal Protective Equipment \(PPE\) Donations](#)

The Somerset County Office of Emergency Management continues to accept donations of personal protective equipment. A collection box has been set up in front of the Emergency Services Training Academy, located at 402 Roycefield Road, Hillsborough, NJ 08844.

Contacting Your State and County Officials

[Click here for information on contacting NJ State and Somerset County Officials](#)

This Newsletter is brought to you by the Hillsborough Township Committee:

Mayor
Doug Tomson

Deputy Mayor
Shawn Lipani

Committeeman
Frank DelCore

Committeewoman
Olivia Holmes

Committeewoman
Gloria McCauley

Hillsborough Township | www.hillsborough-nj.org