



HILLSBOROUGH e-News

COVID-19 case information is updated on the Township [website](#) daily, Monday through Friday. The Mayor's eNews is currently being published twice a week on Tuesday and Thursday.

Flu Vaccination Clinic scheduled for Wednesday (11/18) at Hillsborough Gardens is cancelled due to the anticipated inclement weather.

Governor Murphy's Nov 16th Executive Order

Governor Murphy signs Executive Order 196 pertaining to lowering limits on indoor and outdoor gatherings. [See Executive Order 196.](#)

Township News

[Hillsborough Township Recognizes Martin Noll Sr. for Upcoming 80th Birthday](#)



[Hillsborough Township Community Assistance Network to Help with the Holidays](#)



[Sustainable Tip of the Week...If In Doubt, Throw It Out!](#)

Do not add to the financial and environmental cost of trucking garbage from recycling facilities to landfills. Download the Recycle Coach application, now available to Hillsborough residents for free. The Recycling Coach application has pickup reminders, collection requirements, recycling education all at your fingertips. You can also learn more about recycling in Hillsborough by visiting sustainablehillsborough.com.



[New Jersey American Water Offers Payment Assistance Programs to Customers](#)

- Customers can learn about the company's H2O Help to Others Program™ and apply by contacting program administrator New Jersey SHARES at 877-

NJAWH2O (652-9426), or online at www.njshares.org.

- For more information on the company's other assistance programs visit www.newjerseyamwater.com under Customer Service & Billing, [Bill Paying Assistance](#) or call the Customer Service Center at 800-272-1325.
- New Jersey American Water is also offering a *Bill Paying Assistance Virtual Information Session* on November 18th from 4:00pm to 5:00pm. [For more information.](#)



[Click the icons to listen to the Official Podcast of Hillsborough Township](#)



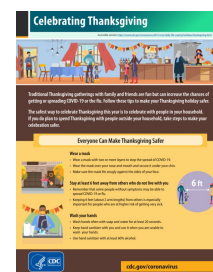
Mayors Wellness



[Hillsborough Health Department's Recommendations for Students Coming Home From College for the Holidays 2020](#)



[CDC Tips For a Healthy and Safe Thanksgiving](#)



Hey Hillsborough, Looking for Something To Do?

Township and Community Events can be found on the Township website [Calendar](#)



[Hillsborough Township PBA 205 - Stuff the Bus](#), November 21st

[Shop Hillsborough Saturday](#), November 28th

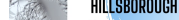


Department Updates

Visit Department pages on the Township [website](#) for their updates

2020 Leaf Pick-up Program can be found on the [Public Works page](#) of the Township website

There is Still Time to Register for Hillsborough Park and Recreation [2020-2021 Fall / Winter Programs](#)

The logo for Hillsborough Parks & Recreation features a stylized tree with colorful leaves in shades of orange, yellow, and red. To the right of the tree, the text "HILLSBOROUGH PARKS & RECREATION" is written in a bold, sans-serif font, with "HILLSBOROUGH" on the top line, "PARKS" on the second line, and "& RECREATION" on the third line. The entire logo is set against a light blue background with a subtle wave pattern.

RECREATION
2020 - 2021
Fall / Winter
Activities Guide

What's inside?

- Youth Programs • STEAM Programs
- Twice a Month • Breakfast
- AGL Lessons
- Skills & Drills

More to come in your Community, Schedule or
www.Williamsportrecreation.org



Township Employment Opportunities

Visit the Township website for [all job opportunities and the application form](#)

Community Bulletin Board

[Virtual Medicare Presentation: COVID and Your Medicare Coverage, Changes in 2021](#), November 19th

[Red Ribbon Week Committee Invites You to Create a Poster with Anti-Drug Message](#), enter by November 30th

Red Ribbon Week Committee Invites You to Create a Poster with Anti-Drug Message, enter by November 30th



This year's Red Ribbon Week Committee invites you to create a poster with your anti-drug message!

5 Grand Prizes

\$25.00 gift certificate to Barnes & Noble

so Runner-Up Prizes

\$100.00 gift certificate to Barnes & Noble

There will be 3 categories of Prizes

- Elementary School Students
- Junior High School Students
- High School Students
- Adults

All posters will be displayed in the Municipal

Details:

- Design a poster with the theme: **"BE HAPPY BE BRAVE BE IDEAL PRINCE"**
- Posters should communicate a positive message to the community through this theme
- Poster Size: 11" x 17"
- Phase 1: Submit the back of your poster, **Name, Address, Home Phone Number, Grade, School, and E-mail address**
- All posters will be selected at a random judged by the International Children's Cultural Alliance
- Prizes will be an display in the International Children's Cultural Alliance
- All posters will be returned unless requested
- All posters must be received by **November 30th, 2015**
- All posters should be original or dropped off to:
 - Middle Grades, 1 & 2, 3, 4, 5, 6, 7, 8, 9, 10, 11, 12, 13, 14, 15, 16, 17, 18, 19, 20, 21, 22, 23, 24, 25, 26, 27, 28, 29, 30, 31, 32, 33, 34, 35, 36, 37, 38, 39, 40, 41, 42, 43, 44, 45, 46, 47, 48, 49, 50, 51, 52, 53, 54, 55, 56, 57, 58, 59, 60, 61, 62, 63, 64, 65, 66, 67, 68, 69, 70, 71, 72, 73, 74, 75, 76, 77, 78, 79, 80, 81, 82, 83, 84, 85, 86, 87, 88, 89, 90, 91, 92, 93, 94, 95, 96, 97, 98, 99, 100, 101, 102, 103, 104, 105, 106, 107, 108, 109, 110, 111, 112, 113, 114, 115, 116, 117, 118, 119, 120, 121, 122, 123, 124, 125, 126, 127, 128, 129, 130, 131, 132, 133, 134, 135, 136, 137, 138, 139, 140, 141, 142, 143, 144, 145, 146, 147, 148, 149, 150, 151, 152, 153, 154, 155, 156, 157, 158, 159, 160, 161, 162, 163, 164, 165, 166, 167, 168, 169, 170, 171, 172, 173, 174, 175, 176, 177, 178, 179, 180, 181, 182, 183, 184, 185, 186, 187, 188, 189, 190, 191, 192, 193, 194, 195, 196, 197, 198, 199, 200, 201, 202, 203, 204, 205, 206, 207, 208, 209, 210, 211, 212, 213, 214, 215, 216, 217, 218, 219, 220, 221, 222, 223, 224, 225, 226, 227, 228, 229, 230, 231, 232, 233, 234, 235, 236, 237, 238, 239, 240, 241, 242, 243, 244, 245, 246, 247, 248, 249, 250, 251, 252, 253, 254, 255, 256, 257, 258, 259, 260, 261, 262, 263, 264, 265, 266, 267, 268, 269, 270, 271, 272, 273, 274, 275, 276, 277, 278, 279, 280, 281, 282, 283, 284, 285, 286, 287, 288, 289, 290, 291, 292, 293, 294, 295, 296, 297, 298, 299, 300, 301, 302, 303, 304, 305, 306, 307, 308, 309, 310, 311, 312, 313, 314, 315, 316, 317, 318, 319, 320, 321, 322, 323, 324, 325, 326, 327, 328, 329, 330, 331, 332, 333, 334, 335, 336, 337, 338, 339, 340, 341, 342, 343, 344, 345, 346, 347, 348, 349, 350, 351, 352, 353, 354, 355, 356, 357, 358, 359, 360, 361, 362, 363, 364, 365, 366, 367, 368, 369, 370, 371, 372, 373, 374, 375, 376, 377, 378, 379, 380, 381, 382, 383, 384, 385, 386, 387, 388, 389, 390, 391, 392, 393, 394, 395, 396, 397, 398, 399, 400, 401, 402, 403, 404, 405, 406, 407, 408, 409, 410, 411, 412, 413, 414, 415, 416, 417, 418, 419, 420, 421, 422, 423, 424, 425, 426, 427, 428, 429, 430, 431, 432, 433, 434, 435, 436, 437, 438, 439, 440, 441, 442, 443, 444, 445, 446, 447, 448, 449, 450, 451, 452, 453, 454, 455, 456, 457, 458, 459, 460, 461, 462, 463, 464, 465, 466, 467, 468, 469, 470, 471, 472, 473, 474, 475, 476, 477, 478, 479, 480, 481, 482, 483, 484, 485, 486, 487, 488, 489, 490, 491, 492, 493, 494, 495, 496, 497, 498, 499, 500, 501, 502, 503, 504, 505, 506, 507, 508, 509, 510, 511, 512, 513, 514, 515, 516, 517, 518, 519, 520, 521, 522, 523, 524, 525, 526, 527, 528, 529, 530, 531, 532, 533, 534, 535, 536, 537, 538, 539, 540, 541, 542, 543, 544, 545, 546, 547, 548, 549, 550, 551, 552, 553, 554, 555, 556, 557, 558, 559, 560, 561, 562, 563, 564, 565, 566, 567, 568, 569, 570, 571, 572, 573, 574, 575, 576, 577, 578, 579, 580, 581, 582, 583, 584, 585, 586, 587, 588, 589, 590, 591, 592, 593, 594, 595, 596, 597, 598, 599, 600, 601, 602, 603, 604, 605, 606, 607, 608, 609, 610, 611, 612, 613, 614, 615, 616, 617, 618, 619, 620, 621, 622, 623, 624, 625, 626, 627, 628, 629, 630, 631, 632, 633, 634, 635, 636, 637, 638, 639, 640, 641, 642, 643, 644, 645, 646, 647, 648, 649, 650, 651, 652, 653, 654, 655, 656, 657, 658, 659, 660, 661, 662, 663, 664, 665, 666, 667, 668, 669, 670, 671, 672, 673, 674, 675, 676, 677, 678, 679, 680, 681, 682, 683, 684, 685, 686, 687, 688, 689, 690, 691, 692, 693, 694, 695, 696, 697, 698, 699, 700, 701, 702, 703, 704, 705, 706, 707, 708, 709, 710, 711, 712, 713, 714, 715, 716, 717, 718, 719, 720, 721, 722, 723, 724, 725, 726, 727, 728, 729, 730, 731, 732, 733, 734, 735, 736, 737, 738, 739, 740, 741, 742, 743, 744, 745, 746, 747, 748, 749, 750, 751, 752, 753, 754, 755, 756,

YOUR PARTICIPATION HELPS SEND A MESSAGE FOR A DRUG-FREE HILLSBOROUGH
Any questions, please contact Mindy Muggle of community@hillsborough.org

Somerset County News

County Office of Emergency Management Supports ‘Register Ready’- Vulnerable Residents Can Sign Up for a Free Safety Resource

Adopt-A-Family Program to Help In-Need Residents - There's Still Time to Help, Donations Must Be Postmarked by November 21st

Rental Relief Funding Still Available for COVID-impacted Tenants



Somerset County Library System of NJ (SCLSN) [News](#) and [Events](#)

2020 General Election November 3, 2020



Somerset County Clerk Posts Preliminary Results for General Election

COVID-19 Community Resources

- [Somerset County Health Department will Hold COVID-19 Drive-thru Testing Once a Week through December 2nd](#)
- COVID-19 information and resources can be found on the Township website [COVID-19 Information Page](#)
- If you are a Hillsborough resident and have tested positive for Coronavirus / COVID-19, please contact the Health Department at 908-369-5652
- COVID-19 information on [Underlying Conditions](#) and [NJ Contract Tracing](#)

This Newsletter is brought to you by the Hillsborough Township Committee:

Mayor
Doug Tomson

Deputy Mayor
Shawn Lipani

Committeeman
Frank DelCore

Committeewoman
Olivia Holmes

Committeewoman
Gloria McCauley

Hillsborough Township | www.hillsborough-nj.org