

Thursday, May 28, 2020



HILLSBOROUGH e-News

Traffic Advisory

The following location will have roadwork:

- Wertsville Road will be closed between Montgomery Road and Rainbow Hill Road tomorrow, Friday May 29th from 8 am until 4:30 pm for paving. Please follow the posted detour.

Please exercise caution while traveling through construction areas and expect delays.

Township News

[Hillsborough Township Recognized by Mayors Wellness Campaign as "Healthy Town" for 2019](#)

"Earlier this year, I announced that Hillsborough Township was recognized as a 2019 Healthy Up-and-Coming town. The inaugural Healthy Township Reception was canceled due to the COVID-19 pandemic, but we have since received our plaque and banner," announced Mayor Doug Tomson. [Read more.](#)

[Hillsborough Residents: Don't Forget to Respond to the Census!](#)

The 2020 Census is happening now! You can complete your questionnaire [online](#), by phone, or by mail.

[Update on the 2020 Paving Program from Hillsborough Engineering Department:](#)

- Willow Road Phase 1 (between Amwell Road & Valinor Drive) is completed
- Andria Avenue is completed
- Hillsborough Road (between Bypass & Willow Rd) is completed
- Brooks Boulevard – concrete ramps are completed
- Willow Road Phase 2 (between Valinor & Hillsborough Rd) is under NJDOT review, paving planned for Fall 2020 or Spring 2021
- Paving of Brooks Boulevard, East Mountain Road, Wertsville Road, and the Green Hills Development should be completed by the end of June
- Camplain Road has been held up due to work by PSE&G

[Update from the Building Department:](#)

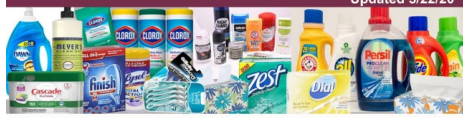
During this time that the Municipal Building is closed to the public, in order to pay for permits, the Building Department is accepting Credit Card payments over the phone. Once the application is processed, we will mail out the paperwork, this will help cut back on delays.

Any pool capable of holding 24" or more of water requires Building and Zoning Permits, pool barrier, etc. If new Electrical outlets or power feed needs to be installed to run the filter, then an Electrical Permit is also required. [For Building Department website.](#)

Update from Social Services:

Items may be dropped off, Monday thru Friday 8:00 am to 4:30 pm, by the entrance to the Social Services Department located across from the wooden gazebo at the Municipal Complex.

Updated 5/22/20



C.A.N. we count on you?

The Hillsborough Community Assistance Network continues to rely on the local community to help your Hillsborough neighbors in need.

Items we are currently low on:

Stuffing	Snacks	Laundry Detergent
Mashed Potatoes	Breakfast Bars	Dish Detergent
Pasta Sides	Canned Fruit	Cleaning Products
Hamburger Helper	Boxed Spaghetti	Cleaning Sponges

Items may be dropped off by the entrance to the Social Services Department.
Located across from the wooden Gazebo At the municipal complex
Monday thru Friday between 8:00am and 4:30pm.

Monetary donations can also be made by mailing in a check or going to hillsborough-nj.org



Hillsborough Township Municipal Complex
The Peter J. Blondi Building
379 South Branch Road
Hillsborough, NJ 08844
908-369-3580
[Hillsborough-nj.org](https://hillsborough-nj.org)

Update from Hillsborough Parks and Recreation Department:

Just a reminder, in an effort to protect individuals safety and well being, the following facilities remain closed: all Hillsborough Township playgrounds, athletic courts and fields, the skate park and the dog park. Tennis courts are open.

Bathroom facilities are available at Singley Park, Ann Van Middlesworth Park, Docherty Park, Woodfield Park West, Woodfield Park East, Amsterdam Park, Municipal Soccer Field (by the parking lot), Ottos Park and Country Classics Park. Please remember to practice social distancing.

Also...don't forget to join our virtual programs like the **88.5K Challenge** or **Hillsborough Clue Game!** Go to hillsboroughnjrecreation-nj.org and look under Virtual Programs for more information.

Sustainable Tips of the Week:

Tip #1: Reusing items like clothes, tools, furniture and other homewares is an easy and effective method of reducing waste and saving money. Check out the DEP Bureau of Sustainability's May Infographic for tips on how to reuse and repair goods so you can keep these items out of landfills and money in your pocket! For more information, check out the [DEP's Source Reduction resource page.](#)

Tip #2: Idling your vehicle wastes money & puts pollution into the air. So when you support local businesses that offer curbside pickup, please shut off engine when waiting for more than three minutes.



[Reminder: Auten Road Facility is Open](#)



[Click here for more information on the Annual Clean-Up Program](#)

[Click here for more information on the Senior Curbside pick up program](#)

[Greater Somerset County Virtual 5K Walk/Run](#)

Go the (social) distance with Greater Somerset County YMCA's 5K Virtual Walk and Run. Go whenever you want, wherever you want between May 30-June 6 and post your time and pictures on social media using the hashtag #GSCYMCA5K. Use any running app to calculate your distance and time (5K equals 3.1 miles). Let's celebrate what we can do, and the health we have! [Registration is required, sign-up by May 29th.](#)



[Hillsborough High School Field Hockey Team's Homework Helpers Offering Free Tutoring \(click here for more information\)](#)

Online school has its advantages and disadvantages. In efforts to help out younger students who are having difficulties adapting to online school, the Hillsborough High School Field Hockey team is volunteering their time to tutor, read stories and answer school-related questions to younger kids via email and google meet. The team is available to help out grades K-8. The team has girls who are skilled in Math, Science, History and English. [Read more.](#)

[Changes Being Made to BoroSAFE](#)

Since May is Mental Health Awareness Month, it's the perfect time to let you know about some important

changes to BoroSAFE. In addition to educating everyone about suicide awareness and prevention, they are expanding their focus to encompass the whole continuum of mental health issues. [For more information.](#)

24/7 Resources:

[Crisistextline.org](https://www.crisistextline.org) Text HOME to 741741
2nd Floor Youth Helpline (call or text) 888-222-2228
National Suicide Hotline 1-800-273-TALK (8255)
Always call 911 in case of emergency



Hey Hillsborough! Since May is Mental Health Awareness Month, it's the perfect time to let you know about some important changes to BoroSAFE. In addition to educating everyone about suicide awareness and prevention, we are expanding our focus to encompass the whole continuum of mental health issues.

NEW
Our Mission:
BoroSAFE is a community collaborative with an aim to provide access to mental health resources, emotional well-being best practices, and suicide prevention resources across the entire Hillsborough Community.

Our Goal:
To proactively connect our community with resources so that we can all care for our emotional well-being, no matter where on the mental health continuum we may fall.

• Please look for us at future events in the surrounding community! • We will be able to provide you with many resources and information! • Website: [borosafe.org](https://www.borosafe.org) • Contact: Chad Berman & Kristen Saleeba (co-chairpersons) BoroSAFE@gmail.com

Mental Health Resources:

- National Suicide Hotline: 1-800-273-TALK (8255)
- Mental Health America
- National Alliance on Mental Illness (NAMI)
- CrisisTextline.org Text HOME to 741741
- 2nd Floor Youth Helpline (call or text) 888-222-2228

Hillsborough Township is in the process of upgrading its website. As the new site rolls out, some pages may be inaccessible for a short period of time. We appreciate your patience and look forward to bringing you a new and improved [Hillsborough-nj.com](https://www.hillsborough-nj.com).

Hillsborough is Open for Business

Which of your favorite Hillsborough locations are "Open for Business"?
Support Hillsborough's Local Businesses!



Somerset County News

[Household Hazardous Waste Drop-off May 30th - Safely Dispose of Harmful Items](#)

[County Transportation to Phase-In Services June 1st](#)

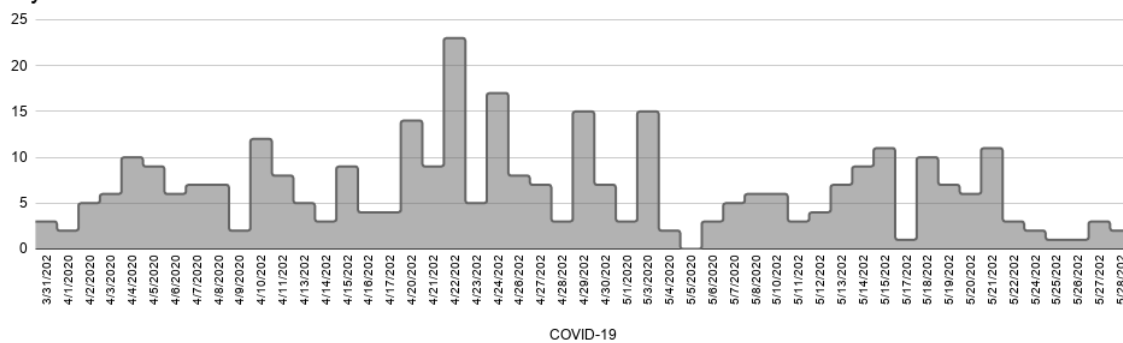
[Youth Leadership Somerset Accepting Applications Empowering Youth to Lead with Purpose](#)

COVID-19 Hillsborough Reported Case Update

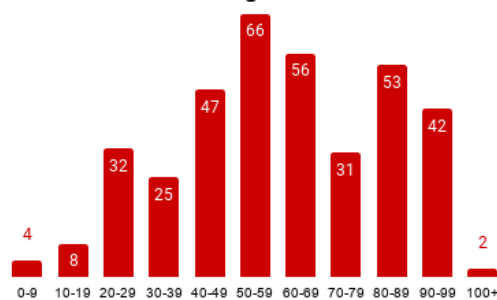
	Hillsborough	Millstone	Somerset County	New Jersey	United States
CASES	366	2	3,977	157,185	1,698,523
DEATHS	51	NA	409	11,401	100,446
RECOVERED	178	NA	NA	NA	NA

Breakdown of Hillsborough Township Cases As Reported by Hillsborough Township Health Department

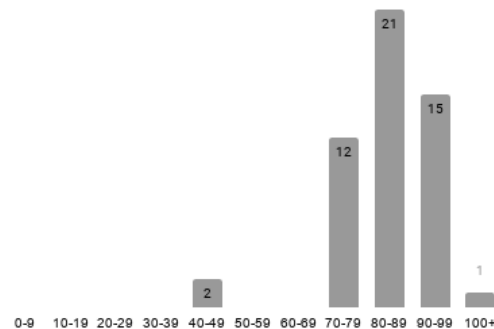
Daily Case Count



Positive Hillsborough Township Cases by Age Range



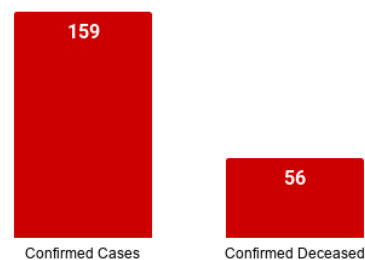
Deceased by Age Range



Disclaimer:

Please be advised that the numbers posted below and on the Township website are those that are reported by Hillsborough Township Health Department based on reports from the NJ Department of Health surveillance system. The reported numbers are only from those individuals who have been tested for COVID-19 and are confirmed positive through an FDA approved laboratory for COVID-19 testing purpose. It does not include those contacts of the positive individuals or any individuals, who are sick and have not been tested.

Hillsborough Long Term Care/Assisted Living Facilities



* Confirmed cases and confirmed deceased from Long Term Care and Assisted Living Facilities may not also be included in the total number of cases above.

The number of cases from the above section by age and deceased cannot be added to the Long Term Care and Assisted Living Facilities confirmed cases and confirmed deceased to get a total case count and a total deceased count. The reason for this is that there are different reporting mechanisms in place capturing that data. The NJ Department of Health surveillance system obtains reports from State run labs. The Long Term Care and Assisted Living Facilities utilize many different labs, State, out-of-state and private, therefore, their numbers are not completely reflected in the total Hillsborough numbers from the State system at this time. That withstanding, you cannot simply add the two sets of numbers either to get a total case count, as some of the LTC/ALF numbers are counted in the State system.

If you are a Hillsborough resident and have tested positive for Coronavirus / COVID-19, please contact the Health Department at 908-369-5652.

The Hillsborough Township Health Department continues to monitor all cases and is

working with the State to identify any potential contacts for follow-up. A representative from the Hillsborough Township Health Department will reach out to all individuals determined to have been in close contact with the positive testing persons within 24-48 hours of each case being confirmed.

[NJ Residents with a Positive COVID-19 Test:](#)

[Instructions & Next Steps](#)

Somerset County COVID-19 Testing Site

[Testing at Raritan Valley College \(RVCC\) Continues on June 2nd and June 4th](#)

COVID-19 Testing Continues for Somerset County residents at Raritan Valley Community College (RVCC) on Tuesday, June 2nd and Thursday, June 4th. Testing will be by appointment only and a valid doctor's prescription is required. Testing site will be open from 10 a.m. to 1 p.m.



*Hillsborough Township
Municipal Services Open
to Residents and Businesses*

Hillsborough Municipal Services are open to serve both our residents and business community, despite the Municipal Building being closed. [See the full list of services.](#)

Finance / Tax Collector Update:

The schedule for in person CASH only tax payments will be Tuesdays, from 9 am until noon, and Thursdays, from 1 pm until 4 pm.

Please keep in mind that taxes were due May 1st, however the grace period has been extended until June 1st (the last day of the grace period) and cash payment will be accepted that day from 9 am to 3 pm.

As always, you can still pay your tax by check via the mail or dropping it in the lockbox at the Police Department or [online payment](#).

Below are photos of Hillsborough Township Departments delivering the services that you have come to expect from Hillsborough Township.



Public Works:
DPW's Dave Burke prepping the
Municipal Complex parking lot before
striping project



Parks and Recreation:
Parks' Joe Maturin working around Willow
Road

[See Hillsborough Township Police Department's "We're Here For You" Video](#)



Updates, Closures and Cancellations

A full list of the COVID-19 Updates, Closures and Cancellations is posted on the [Hillsborough Township website](#)

- Parks and Recreation Commission Meeting June 3rd using virtual technology - [for meeting information and instructions](#)

COVID-19 State Updates & Community Resources

For a full list of COVID-19 Resources, visit the Hillsborough Township [COVID-19 Information Page](#)

[Hillsborough YMCA - Information For Essential Personnel Child Care](#)

[PSE&G Encourages Eligible Customers to Apply For Assistance In Paying Utility Bills](#)

[PIONEER Family Success Center](#)

The Pioneer Family Success Center is a program of EmPoWER Somerset, a nonprofit organization. We offer the community a gathering place, connect families to helpful resources in Somerset County, NJ and bring families together through free events, programs & local activities. [For June Events.](#)

[Safe + Sound Somerset](#)

Safe+Sound Somerset is a team of dedicated and qualified diverse professionals and volunteers sharing a commitment to empowering survivors and engaging the community to end abuse.



[Contact Tracing Opportunity](#)

Are you interested in assisting NJ's contact tracing efforts? [Register at the NJ COVID-19 Information Hub website](#) and be notified when opportunities become available.

[Click here for updates from Somerset County Library System of NJ \(SCLSNJ\)](#)

[For Weekly COVID-19 Message from Dr. Lisa Antunes, Superintendent of Schools](#)

How Can I Help?

[Hillsborough Township Now Accepts Online Donations for the Community Assistance Network](#)

Donations to the Hillsborough Community Assistance Network (C.A.N.) can now be made [online](#). Donation of items are also accepted - [see list of most needed items](#).

[Somerset County Office of Emergency Management Continues to Accept Personal Protective Equipment \(PPE\) Donations](#)

The Somerset County Office of Emergency Management continues to accept donations of personal protective equipment. A collection box has been set up in front of the Emergency Services Training Academy, located at 402 Roycefield Road, Hillsborough, NJ 08844.

[**Register to Volunteer**](#)

Contacting Your State and County Officials

[Click here for information on contacting NJ State and Somerset County Officials](#)

This Newsletter is brought to you by the Hillsborough Township Committee:

Mayor

Deputy Mayor

Doug Tomson

Shawn Lipani

Committeeman
Frank DelCore

Committeewoman
Olivia Holmes

Committeewoman
Gloria McCauley

Hillsborough Township | www.hillsborough-nj.org