

Friday, June 26, 2020



HILLSBOROUGH e-News

Township News

Hillsborough Parks and Recreation Announcements

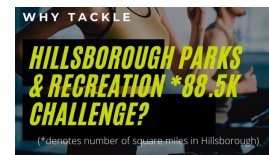
Winners of the Clue Game and 88.5K Challenge Announced

Hillsborough Recreation Department recently held two virtual activities for residents...an 88.5K Challenge and a Clue Game. All of the participants had a blast and found new places to visit in Hillsborough while getting active in the community!



Clue Game winners received \$5 Super Sundaes gift certificates. The winners were Heather Vidal, Nadine Sapirman, Joe Horesco, Katherine Rygiel, J.P. McAvaddy, Sarah Slutzky, Kim Rak, Jacob D., Sarah D. and Gabriel Bezares. Thank you to Super Sundaes for donating the certificates!

The 88.5K Challenge winners received \$5 Hillsboro Farms gift certificates. Winners were Dora Szep, Gene Reinhardt, Kim Sheehan and Jaime Gerard. Thank you to Hillsboro Farms for donating the certificates!



In-Person Day Camp Taking Place This Summer!

Hillsborough Parks & Recreation is proud to announce that in person day camp will officially be taking place this summer. This has been a long process over the past few months in putting a program together that meets the required guidelines and requirements from the state of New Jersey, though we can confidently say we have been able to accomplish just that.



Hillsborough Parks & Recreation COVID-19 Youth Summer Camp Standards

Hillsborough Parks & Recreation (HPR) Summer camps will adhere to a strict health protocol that is in place as of June 1st, 2020. Though we are still confident in the current program that will be offered, HPR will continue to monitor safety and health of our children, staff and families in our summer camp program and those who are participating in the program. Through this program, we are able to keep the program running safely and provide a fun summer for all. HPR will continue to follow the guidance of the New Jersey Department of Health, Local Emergency Management, the American Camp Association, New Jersey Parks & Recreation Association as well as the CDC.

Since COVID-19 health risks and regulations have been changing on a daily basis and we anticipate that will continue to do so throughout the summer, HPR management will be informed immediately and any required changes are deemed necessary.

Notes are updated continuously. For participants that will be participating in the summer's camp program, if you have any additional questions, please email hillsborough@hillsboronj.org.

Below are a few of the highlight points of the 2020 summer camp program:

- One camp location at Auten Road School
- Ages 5-13 (Must have completed kindergarten)
- Camp will operate over a six week period from 7/6-8/14
- Various time frames offered between 7:00 am - 6:00 pm
- See the [COVID-19 Summer Camp standards](#) for details and answers many families are looking for
- [Register here for Summer Camp.](#)

Summer In-Person / Virtual Programs

Hillsborough Parks & Recreation is proud to begin offering in person/virtual programs such as Art in the Park, Hip-Hop Dance, Bricks 4 Kidz and many more with registration starting today June 19th, at 5:00 pm.

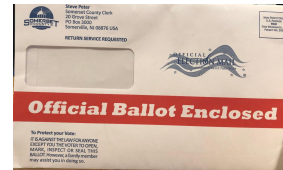
Residents can now sign up for both virtual and in person programs. Continue to check the Parks & Recreation [website](#) and social media accounts for future release dates and information.



2020 Primary Election Information

Somerset County 2020 Primary Election Updates

- Per Executive Order 144, registered, active, Democrats and Republicans will be mailed ballots automatically. Unaffiliated and Inactive voters will be mailed a special application that they can use if they would like to receive a ballot for the July 7th Primary. That application can also be [printed here](#) and mailed.
- [Somerset County Clerk Launches 'How to Vote by Mail' Video.](#)
- [For additional election information from Somerset County.](#)



Additional Primary Election Updates:

- The Primary will be held on July 7th.
- All registered Democratic voters will receive a Democratic Mail In Ballot, with pre-paid postage.
- All registered Republican voters will receive a Republican Mail In Ballot, with pre-paid postage.
- All registered unaffiliated and inactive voters will receive a Mail In Ballot Application, with pre-paid postage.
- To receive the ballot by mail, the application must be received by the *County Clerk* seven (7) days prior to the election. A voter may also return the application in person to the *County Clerk* until Election Day, but the voted ballot must be returned by 8 pm.
- The *County Clerk* cannot accept faxed or emailed copies of a Application for Vote by Mail Ballot, unless you are a Military or Overseas Voter, since an original signature is required.
- There are only 3 polling locations for this Primary in Hillsborough - the Municipal Building, Mary, Mother of God Church and Auten Road School.
- All other voters who visit a polling location will be required to vote on a provisional ballot.
- In person voting will be via provisional ballot only, unless the voter is visually impaired or otherwise certifies to a disability which requires an accessible voting machine.
- Please visit the state website at <https://www.nj.gov/state/elections> for more information.



Returning Primary Election Voted Mail-In Ballots:

- There is a drop box for ballots just outside the front entrance of the Hillsborough Municipal Building.
- There will also be drop boxes located in [several locations throughout the County.](#)
- All voted ballots must be in a drop box, delivered to Board of Elections, by 8:00 pm on Election Day.
- Voted ballots can be mailed to the Board of Elections at 20 Grove Street in Somerville - they must be postmarked by 8:00 pm on Election Day.
- Voted Mail In Ballots will not be accepted at the Polling locations.



Hillsborough's 2020 Family Fun Day-Fireworks-Music Festival Event Postponed

Hillsborough's annual Family Fun Night event, which includes Fireworks and Music Festival, was scheduled for Saturday June 27th. It has been postponed due to the COVID-19 pandemic. No new date has been determined for the event.



Ground Based Sparkling Devices and Novelties are Now Legal in New Jersey

As the 4th of July approaches, please remember that only certain types of fireworks are legal in New Jersey. When using legal sparkling novelties, remember to wet them down before discarding. [See the reference guide for more information](#). Please celebrate safely!



PSE&G is Prepared for Strong Winds, Severe Storms

Public Service Electric & Gas Co. is prepared for the thunderstorms and strong winds forecast for the service area the next few days, particularly Saturday. This storm system is expected to bring pockets of severe weather, with straight-line winds and wind gusts up to 55 mph. [Read more](#).

JCP&L Helpful Information to Prepare for Outages

Whether because of forces of nature such as high winds, lightning, or summer storms, there are times when your power goes out. When an outage happens, JCP&L service crews - and employees who support them - do their best to restore power as soon as possible.



*Hillsborough Township
Municipal Services Open
to Residents and Businesses*

Hillsborough Municipal Services are open to serve both our residents and business community, despite the Municipal Building being closed to the public. [See the full list of services](#).

Department Updates

Building:

- If your pool is capable of holding more than 24 inches of water, you need a permit. Pools have specific requirements for their installation and for their barrier. These requirements are intended to provide protection against potential drowning and near-drowning by restricting access to the pool. Statistics show every year more than 275 children under the age of 5 drown and over 4,000 seek medical treatment. The numbers almost doubles for children 15 and under. If you have a pool or plan on installing one, make sure it is safe and code compliant.

Business Advocate:

- There are several Hillsborough Farms open and offering services for our

community as an additional resource for food products. For the latest information regarding the Hillsborough farming community, please visit [Experience Hillsborough](#) and click on [Hillsborough Harvest](#) or visit the [HBA Facebook page](#).

- Which of your favorite Hillsborough locations are "Open for Business"? Support Hillsborough's Local Businesses!



Public Works:

- The Clean Communities Grant program is continuing as planned with its funding. Please visit the township website under the [Public Works link](#) to explore volunteer opportunities in the upcoming months as the COVID-19 public gathering restrictions are lifted.
- Public Works programs such as Annual Clean Up Drop Off or Grass Drop Off Program are available - go to [our website](#) for details and to read the new safety guidelines.

Below are photos of Hillsborough Township Departments delivering the services that you have come to expect from Hillsborough Township.



Parks and Recreation:
Parks' Tony Riga weeding the Garden of Honor



Health:
Environmental Programs Director Mike Carr and Environmental Health Specialist Nick DeLisi in the office practicing social distancing

Community News

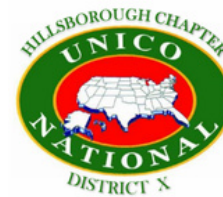
[Hillsborough Residents: Don't Forget to Respond to the Census!](#)

The Census is important because it impacts future planning and funding for infrastructure, future employment, training and healthcare programs. To learn more about the impacts of the census or to complete it online visit the website [2020CENSUS.GOV](#). Take a few minutes and complete your census.



Hillsborough Chapter of UNICO Italian-American Seeking Miss UNICO for 2020-2021

UNICO National Hillsborough Chapter is looking for a young woman who can represent the township's Italian-American community for the 2020-2021 term. Miss UNICO will receive a \$1,000 Scholarship from Hillsborough UNICO. Additional information and application can be found at: [Hillsborough UNICO.org](http://HillsboroughUNICO.org).



2020 Girls HHS Future Raider Field Hockey Camp Flyer Registration Final

2020 Girls HHS Future Raider Field Hockey Camp from Monday August 24th through Thursday August 27th. [Complete the form to register.](#)

2020 Girls HHS Future Raider Field Hockey Camp

Monday August 24th through Thursday August 27th

HILLSBOROUGH

FIELD HOCKEY

Get ready for your 2020 Field Hockey season with this 4-day camp!

• Camp fee: \$100 (includes all equipment and instruction)

• Camp fee: \$100 (includes all equipment and instruction)

• Camp fee: \$100 (includes all equipment and instruction)

• Camp fee: \$100 (includes all equipment and instruction)

• Camp fee: \$100 (includes all equipment and instruction)

• Camp fee: \$100 (includes all equipment and instruction)

• Camp fee: \$100 (includes all equipment and instruction)

• Camp fee: \$100 (includes all equipment and instruction)

• Camp fee: \$100 (includes all equipment and instruction)

• Camp fee: \$100 (includes all equipment and instruction)

• Camp fee: \$100 (includes all equipment and instruction)

• Camp fee: \$100 (includes all equipment and instruction)

• Camp fee: \$100 (includes all equipment and instruction)

• Camp fee: \$100 (includes all equipment and instruction)

• Camp fee: \$100 (includes all equipment and instruction)

• Camp fee: \$100 (includes all equipment and instruction)

• Camp fee: \$100 (includes all equipment and instruction)

• Camp fee: \$100 (includes all equipment and instruction)

• Camp fee: \$100 (includes all equipment and instruction)

• Camp fee: \$100 (includes all equipment and instruction)

• Camp fee: \$100 (includes all equipment and instruction)

• Camp fee: \$100 (includes all equipment and instruction)

• Camp fee: \$100 (includes all equipment and instruction)

• Camp fee: \$100 (includes all equipment and instruction)

• Camp fee: \$100 (includes all equipment and instruction)

• Camp fee: \$100 (includes all equipment and instruction)

• Camp fee: \$100 (includes all equipment and instruction)

• Camp fee: \$100 (includes all equipment and instruction)

• Camp fee: \$100 (includes all equipment and instruction)

• Camp fee: \$100 (includes all equipment and instruction)

• Camp fee: \$100 (includes all equipment and instruction)

• Camp fee: \$100 (includes all equipment and instruction)

• Camp fee: \$100 (includes all equipment and instruction)

• Camp fee: \$100 (includes all equipment and instruction)

• Camp fee: \$100 (includes all equipment and instruction)

• Camp fee: \$100 (includes all equipment and instruction)

• Camp fee: \$100 (includes all equipment and instruction)

• Camp fee: \$100 (includes all equipment and instruction)

• Camp fee: \$100 (includes all equipment and instruction)

• Camp fee: \$100 (includes all equipment and instruction)

• Camp fee: \$100 (includes all equipment and instruction)

• Camp fee: \$100 (includes all equipment and instruction)

• Camp fee: \$100 (includes all equipment and instruction)

• Camp fee: \$100 (includes all equipment and instruction)

• Camp fee: \$100 (includes all equipment and instruction)

• Camp fee: \$100 (includes all equipment and instruction)

• Camp fee: \$100 (includes all equipment and instruction)

• Camp fee: \$100 (includes all equipment and instruction)

• Camp fee: \$100 (includes all equipment and instruction)

• Camp fee: \$100 (includes all equipment and instruction)

• Camp fee: \$100 (includes all equipment and instruction)

• Camp fee: \$100 (includes all equipment and instruction)

• Camp fee: \$100 (includes all equipment and instruction)

• Camp fee: \$100 (includes all equipment and instruction)

• Camp fee: \$100 (includes all equipment and instruction)

• Camp fee: \$100 (includes all equipment and instruction)

• Camp fee: \$100 (includes all equipment and instruction)

• Camp fee: \$100 (includes all equipment and instruction)

• Camp fee: \$100 (includes all equipment and instruction)

• Camp fee: \$100 (includes all equipment and instruction)

• Camp fee: \$100 (includes all equipment and instruction)

• Camp fee: \$100 (includes all equipment and instruction)

• Camp fee: \$100 (includes all equipment and instruction)

• Camp fee: \$100 (includes all equipment and instruction)

• Camp fee: \$100 (includes all equipment and instruction)

• Camp fee: \$100 (includes all equipment and instruction)

• Camp fee: \$100 (includes all equipment and instruction)

• Camp fee: \$100 (includes all equipment and instruction)

• Camp fee: \$100 (includes all equipment and instruction)

• Camp fee: \$100 (includes all equipment and instruction)

• Camp fee: \$100 (includes all equipment and instruction)

• Camp fee: \$100 (includes all equipment and instruction)

• Camp fee: \$100 (includes all equipment and instruction)

• Camp fee: \$100 (includes all equipment and instruction)

• Camp fee: \$100 (includes all equipment and instruction)

• Camp fee: \$100 (includes all equipment and instruction)

• Camp fee: \$100 (includes all equipment and instruction)

Greater Somerset County YMCA Career Forum 2020

Our volunteer-led Career Forum Program provides professional networking and job-search skills for our neighbors who are unemployed, underemployed or in a period of job transition. This free program offers useful assistance and, more importantly, hope. For more information visit: gscymca.org/career-forum



NJ DEP Urges Public to Help Control Mosquito Population by Eliminating Standing Water from Properties

The American Mosquito Control Association has declared June 21-27 as National Mosquito Control Awareness Week. With public health in the spotlight as a result of the pandemic, residents doing their part to eliminate potential breeding grounds for mosquitoes takes on added significance and bolsters the work of the New Jersey State Mosquito Control Commission. [Read more.](#)



Virtual Summer Health Series – Lunch N' Learn at 12pm

Brought to you by the Elizabeth Public Library, Horizon Blue Cross Blue Shield, Rutgers Cancer Institute of New Jersey, and Cancer Support Community Central NJ

Topics and Dates:

English Series - [registration required once for all workshops](#)

- July 10 - Finding Health Information You Can Trust
- July 24 - Eating Healthy for Cancer Prevention
- August 7 - LGBT Health and Cancer Prevention
- August 21 - Resource and Self Care for Caregivers

Spanish Sessions - registration required for each workshop

- 30 de Junio - [Mi Plato En Un Presupuesto](#)
- Spanish language recordings for some of the English Series topics will also be available after the presentations



Hillsborough-Millstone Municipal Alliance Updates

Community in Crisis Offering Narcan Online Training

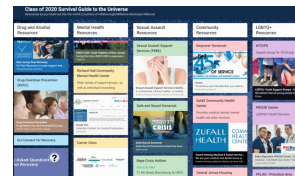
Narcan Virtual Training on June 30, 2020 from 10:00

am to 11:00 am via Webex. Free Narcan kits will be sent to all participants who complete the training. [To Register.](#)



[Class of 2020 Survival Guide to the Universe](#)

Resources as you head out into the world!



[Reminder from Parents Who Host Lose the Most](#)

Reminder for parents about the consequences of serving underage kids as the summer/grad season approaches. For the safety of your children and our community, please keep this in mind as you celebrate this accomplishment.



[Safe + Sound Somerset](#)

Safe+Sound Somerset is a team of dedicated and qualified diverse professionals and volunteers sharing a commitment to empowering survivors and engaging the community to end abuse.



[Safe + Sound Webinar Series](#)

- July 29th: Spotting the Warning Signs of an Abusive Relationship
- August 24th: An Inside Look at Safe+Sound Somerset, The County's Lead Domestic Violence Response Agency
- [To register](#)



[PIONEER Family Success Center](#)

The Pioneer Family Success Center offers the community a gathering place, connect families to helpful resources in Somerset County, NJ and bring families together through free events, programs & local activities. [For Events Calendar.](#)

[Red Cross Offers Virtual Care for New Jersey Families Who Have Lost Loved Ones](#)

[Girl Scout Junior Troop #62308 Helping SAVE as Part of Bronze Award Project](#)



Girl Scout Junior Troop #62308 is helping SAVE as part of our Bronze Award project.

What is SAVE?
SAVE is a local animal shelter that rescues abandoned, abused, and homeless cats and dogs. SAVE takes care of strays and does not require housing at the time of rescue or adoption. It was founded in 1981 and has been taking care of animals ever since. It is located at 1000 Route 405, Suite 100, NJ 08854.

You Can Help Our Troop Help SAVE During These Tough Times!
Please consider donating some of the following objects:

- Old clothes, shoes, and toys (if not too old and if they are clean, please donate them)
- Old books, newspapers, and magazines
- Old toys, especially stuffed animals
- Old food and pet food (if not expired)
- Old furniture and household items
- Old electronics (if they are still working)
- Old tools and hardware
- Old toys, books, and games

Items can be delivered directly to SAVE. For more information about SAVE, visit <https://www.saveanimalsnj.org/>.

Somerset County News

[Somerset County Library System of NJ \(SCLSNJ\)](#)

COVID-19 Updates

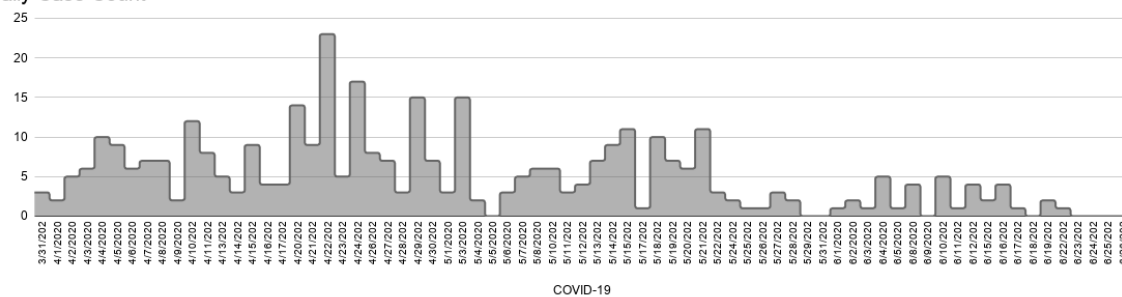
COVID-19 Hillsborough Reported Cases

[COVID-19 Case Information is updated daily on the Township website](#)

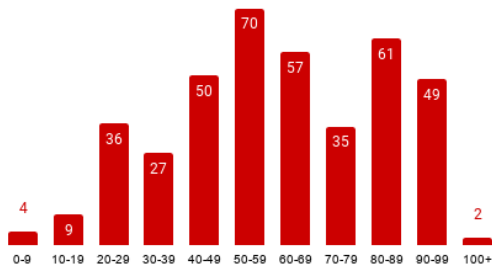
	Hillsborough	Millstone	Somerset County	New Jersey	United States
CASES	400	3	4,264	170,584	2,414,870
DEATHS	54	NA	440	12,895	119,923
RECOVERED	203	NA	NA	NA	NA

Breakdown of Hillsborough Township Cases As Reported by Hillsborough Township Health Department

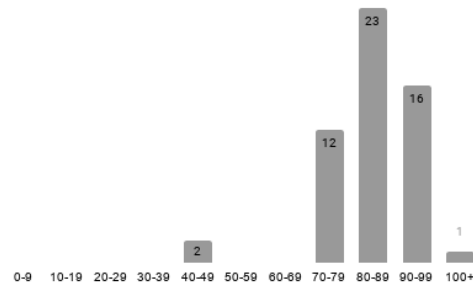
Daily Case Count



Positive Hillsborough Township Cases by Age Range



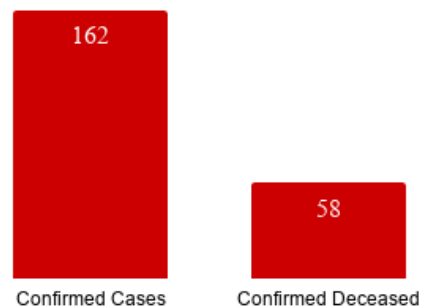
Deceased by Age Range



Disclaimer:

Please be advised that the numbers posted here and on the Township website are those that are reported by Hillsborough Township Health Department based on reports from the NJ Department of Health surveillance system. The reported numbers are only from those individuals who have been tested for COVID-19 and are confirmed positive through an FDA approved laboratory for COVID-19 testing purpose. It does not include those contacts of the positive individuals or any individuals, who are sick and have not been tested.

Hillsborough Long Term Care/Assisted Living



* Confirmed cases and confirmed deceased from Long Term Care and Assisted Living Facilities may not also be included in the total number of cases above.

The number of cases from the above section by age and deceased cannot be added to the Long Term Care and Assisted Living Facilities confirmed cases and confirmed deceased to get a total case count and a total deceased count. The reason for this is that there are different reporting mechanisms in place capturing that data. The NJ Department of Health surveillance system obtains reports from State run labs. The Long Term Care and Assisted Living Facilities utilize many different labs, State, out-of-state and private, therefore, their numbers are not completely reflected in the total Hillsborough numbers from the State system at this time. That withstanding, you cannot simply add the two sets of numbers either to get a total case count, as some of the LTC/ALF numbers are counted in the State system.

If you are a Hillsborough resident and have tested positive for Coronavirus / COVID-19, please contact the Health Department at 908-369-5652.

The Hillsborough Township Health Department continues to monitor all cases and is working with the State to identify any potential contacts for follow-up. A representative from the Hillsborough Township Health Department will reach out to all individuals determined to have been in close contact with the positive testing persons within 24-48 hours of each case being confirmed.

[NJ Residents with a Positive COVID-19 Test: Instructions & Next Steps](#)

Somerset County COVID-19 Testing Site

[Testing at Raritan Valley College \(RVCC\) Continues - Spaces Still Available for July 2nd](#)

COVID-19 Testing continues for Somerset County residents at Raritan Valley Community College (RVCC). Reservations available for Thursday July 2nd. Appointments can be scheduled online at <https://someset-hunterdon.adlabscovidtest.com>. Testing will be by appointment only and a valid doctor's prescription is required. Testing site will be open from 10 am to 1 pm.

[Somerset County Provides COVID-19 Online Resource Center](#)

[COVID-19 Testing-Site Hotline Offers New Hours - Call to Make Appointments](#)

Meeting Updates, Cancellations and Closures

Due to the Governor's Executive Orders and pursuant to P.L. 2020, c.11, all Township meetings will be held using virtual technology and the public may only participate in meetings remotely. Please [visit the calendar](#) on our municipal website for meeting dates, cancellations, updates and instructions.

COVID-19 State & Community Resources

For a full list of COVID-19 Resources, visit the Hillsborough Township [COVID-19 Information Page](#)

[Hillsborough YMCA - Information For Essential Personnel Child Care](#)

Contact Tracing Opportunity

Are you interested in assisting NJ's contact tracing efforts? [Register at the NJ COVID-19 Information Hub website](#) and be notified when opportunities become available.

NJ TRANSIT UPDATE

NJ Transit will continue to respond to the latest on COVID-19 with customer and employee safety as a top priority and keep you informed of our response. To keep informed, go to:

- [NJ Transit - "Your Ride to Recovery" Guide](#)
- [NJ Transit Explores Use of Ultraviolet Technology in Battle Against COVID-19](#)
- [NJ Transit Installs More Modernized Ticket Vending Machines](#)
- [COVID-19 - How We're Protecting You](#)

Per Governor Murphy's Executive Order No. 125,

The number of passengers is limited to 50% of a vehicle's capacity.

50%

Customers must wear a face covering while on board a NJ TRANSIT vehicle.

Please do your part when you ride. Plan Ahead - Slow the Spread

How Can I Help?

[Click here for information on Hillsborough Township's Community Assistance Network \(C.A.N.\) Program](#)

Donations to the Hillsborough Community Assistance Network (C.A.N.) can now be made [online](#). Donation of items are also accepted - [see list of most needed items](#).

HILLSBOROUGH'S FOOD BANK
Updated 5/23/20

C.A.N. we count on you?
The Hillsborough Community Assistance Network continues to rely on the local community to help your Hillsborough neighbors in need.

Items we are currently low on:

Stuffing	Snacks	Laundry Detergent
Mashed Potatoes	Breakfast Bars	Dish Detergent
Pasta Sides	Canned Fruit	Cleaning Products
Hamburger Helper	Boxed Spaghetti	Cleaning Sponges

Items may be dropped off by the entrance to the Social Services Department, located across from the wooden Gasbbo. At the municipal complex Monday thru Friday between 8:00am and 4:30pm.

Monetary donations can also be made by mailing in a check or going to [hillsborough-nj.org](#)

Hillsborough Township Municipal Complex
The Peter J. Biondi Building
275 South Branch Road
Hillsborough, NJ 08844
908-265-3360
[Hillsborough-nj.org](#)

[Somerset County Office of Emergency Management Continues to Accept Personal Protective Equipment \(PPE\) Donations](#)

The Somerset County Office of Emergency Management continues to accept donations of personal protective equipment. A collection box has been set up in front of the Emergency Services Training Academy, located at 402 Roycefield Road, Hillsborough, NJ 08844.

[Register to Volunteer](#)

Contacting Your State and County Officials

[Click here for information on contacting NJ State and Somerset County Officials](#)

This Newsletter is brought to you by the Hillsborough Township Committee:

Mayor
Doug Tomson

Deputy Mayor
Shawn Lipani

Committeeman
Frank DeCore

Committeewoman
Olivia Holmes

Committeewoman
Gloria McCauley

Hillsborough Township | www.hillsborough-nj.org