

Tuesday, June 29, 2021

Special Bulletin



from Hillsborough Township

Storm Warning

The National Weather Service has issued a severe thunderstorm warning for Hillsborough Township. Heavy rains, flooding, impassable roads, downed trees, high winds and power outages are possible. Storms are expected to last throughout this afternoon and into the evening hours.



Please be advised that "911" is reserved for Emergencies Only. For non-emergencies, please dial 369-4323 and press menu option 3.

Reporting Power Outages PSE&G Customers

- [PS&G is Prepared for Hurricane Isaias](#)
- To report an outage call 1-800-436-PSEG (7734), text "OUT" to 4PSEG (47734) or report it [online](#)
- [Tips to Stay Safe During Severe Weather](#)
- Visit [PSE&G's website](#) for more instructions on preparing and reporting outages



JCP&L Customers

- To report an outage call 1-888-LIGHTSS (1-888-544-4877), [text](#) or report it [online](#)
- [Tips for Storm Preparation](#)
- Visit [JCP&L website](#) for more instructions on preparing and reporting outages

Flood and Flooding Reminder:

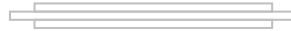
- DO NOT drive onto a flooded roadway
 - DO NOT go around barriers
 - DO NOT drive through flowing water.
- If you approach a roadway that is flooded, TURN AROUND - DON'T

DROWN. It takes just 12 inches of rushing water to carry away a small car, while 2 feet of rushing water can carry away most vehicles. It is NEVER safe to drive or walk into flood waters.



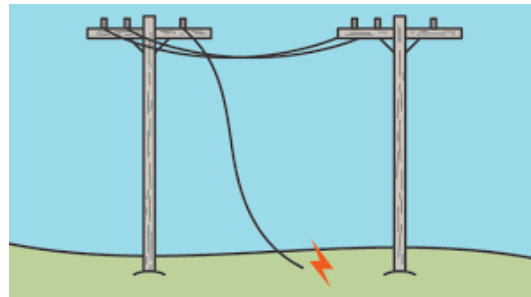
- Drive with extreme caution if roads are even just wet or it is raining. You can lose control of your vehicle if hydroplaning occurs, which is when a layer of water builds up between your tires and the road, causing there to be no direct contact between your vehicle and the road.
- Be Cautious of broken or leaking gas lines, flooded electrical circuits, submerged furnaces or electrical appliances and flammable or explosive materials coming from upstream.
- Before floodwaters crest, turn off the main power switch if you think the electrical circuits are going to be underwater. Never Touch The Switch While You Are Wet Or Standing In Water. Do not turn the electrical system back on until it has been inspected by an electrician.
- Know what a river height forecast means for your property especially how far your property is above or below expected flood levels.
- Know where to go in case of flooding. Remember that you must seek higher ground as quickly as possible, on foot if necessary.

Visit the American Red Cross website for more information about flood safety and preparation.



Fire Safety

- Assume all wires on the ground are electrically charged. This includes cable TV feeds.
- Be aware of and avoid downed utility lines. Report downed or damaged power lines to the utility company or emergency services.
- Be careful when using candles. Keep the flame away from combustible objects and out of the reach of children.
- Some smoke alarms may be dependent on your home's electrical service and could be inoperative during a power outage. Check to see if your smoke alarm uses a back-up battery and install a new battery at least once a year.



Generator Safety

- Keep generators outside of your home. Do not use the generator in the garage. Carbon Monoxide fumes are odorless and can quickly overwhelm you indoors.
- Refuel generators carefully
- Follow the manufacturer's instructions and guidelines when using generators.
- Use the appropriate sized and type power cords to carry the electric load. Overloaded cords can overheat and cause fires.
- Never run cords under rugs or carpets where heat might build up or damage to a cord may go unnoticed.

This Newsletter is brought to you by the Hillsborough Township Committee:

Mayor
Shawn Lipani

Deputy Mayor
Frank DelCore

Committeewoman

Committeeman

Committeeman

Janine Erickson

Doug Tomson

Jeffrey Wright



Hillsborough Township | www.hillsborough-nj.org